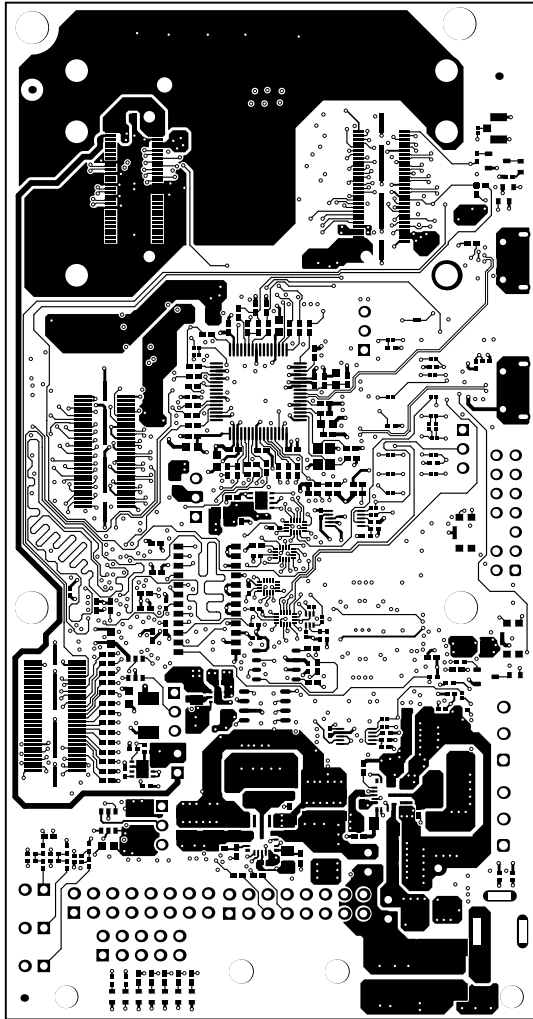
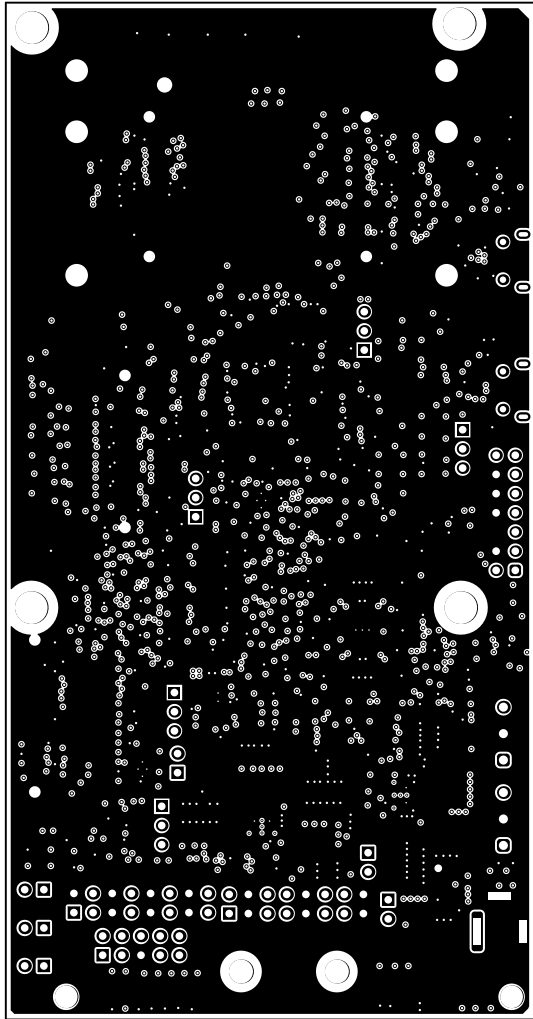


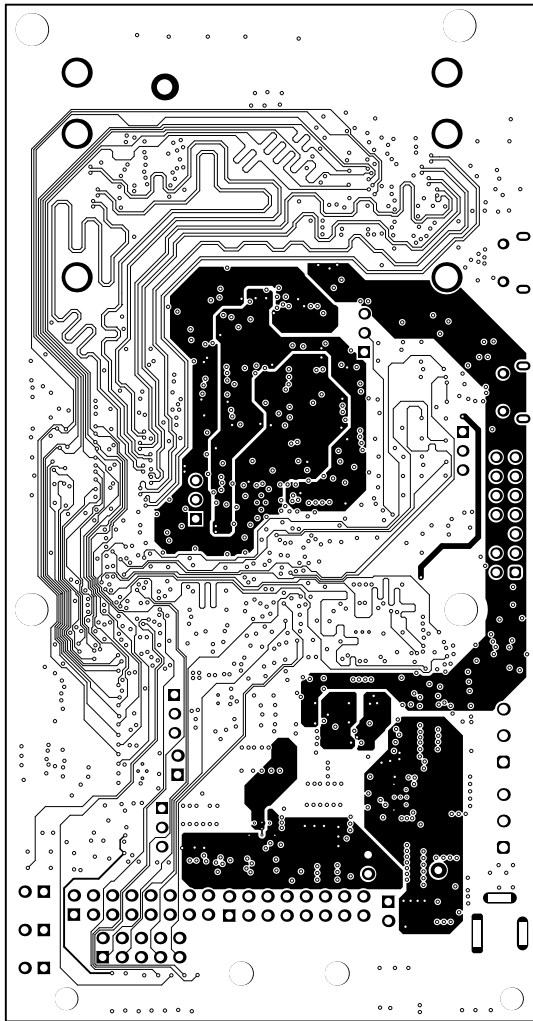
ALL ARTWORK VIEWED FROM TOP SIDE	BOARD #: PROC074	REV: A	SUN REV: Not In VersionControl
LAYER NAME = Top Solder	TID #: N/A		
PLOT NAME = Top Solder Mask	GENERATED : 8/28/2018 12:35:06 PM	TEXAS INSTRUMENTS	



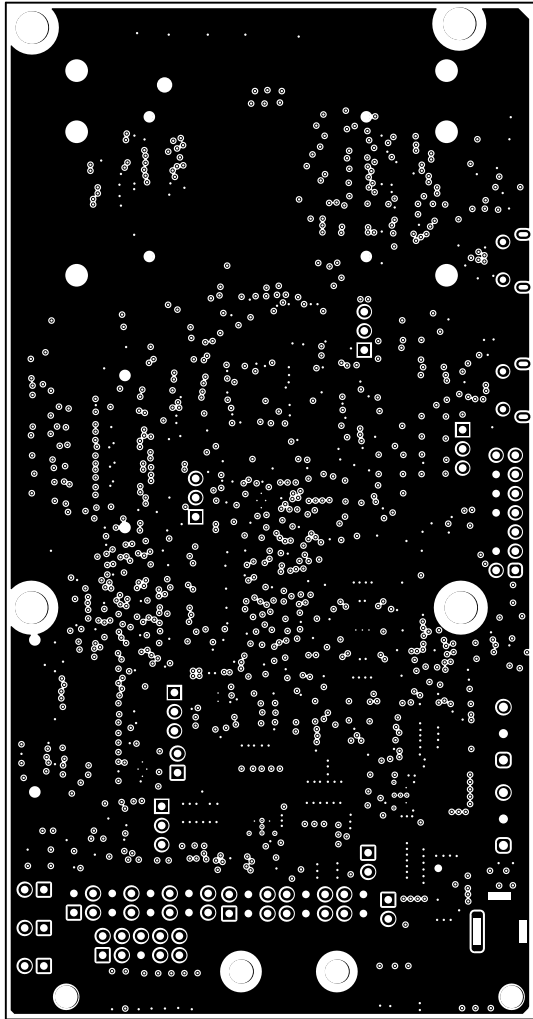
ALL ARTWORK VIEWED FROM TOP SIDE	BOARD #: PROC074	REV: A	SUN REV: Not In VersionControl
LAYER NAME = Top Layer	TID #: N/A		
PLOT NAME = Top Layer	GENERATED : 8/28/2018 12:35:07 PM		TEXAS INSTRUMENTS



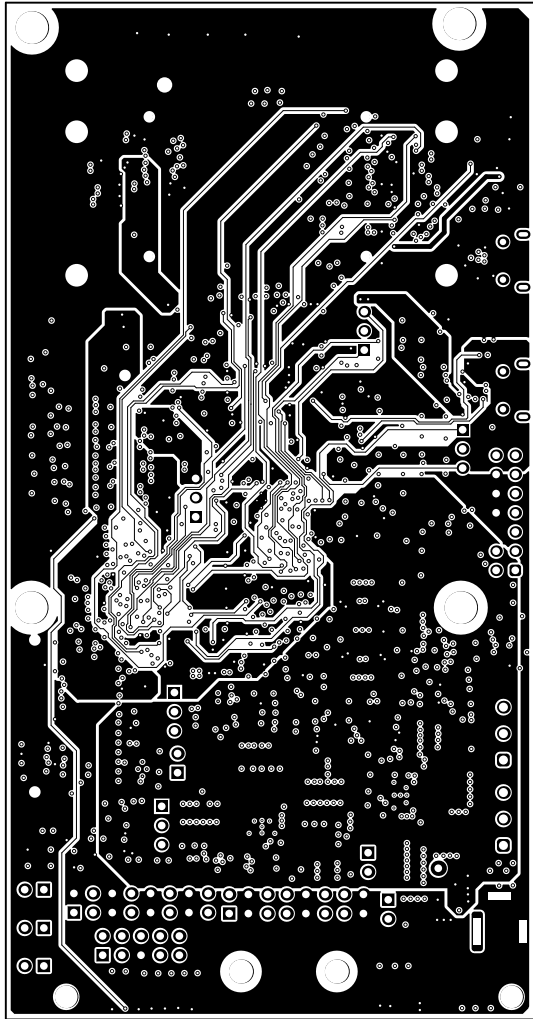
ALL ARTWORK VIEWED FROM TOP SIDE	BOARD #: PROC074	REV: A	SUN REV: Not In VersionControl
LAYER NAME = L2-GND	TID #: N/A		
PLOT NAME = Signal Layer 1	GENERATED : 8/28/2018 12:35:09 PM		TEXAS INSTRUMENTS



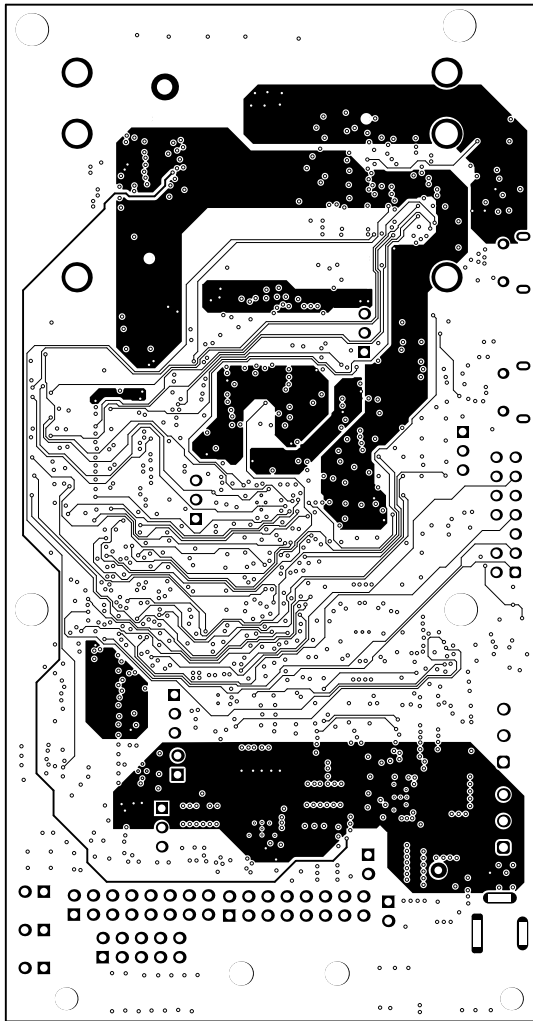
ALL ARTWORK VIEWED FROM TOP SIDE	BOARD #: PROC074	REV: A	SUN REV: Not In VersionControl
LAYER NAME = L3-SIG1	TID #: N/A		
PLOT NAME = Signal Layer 2	GENERATED : 8/28/2018 12:35:10 PM		TEXAS INSTRUMENTS



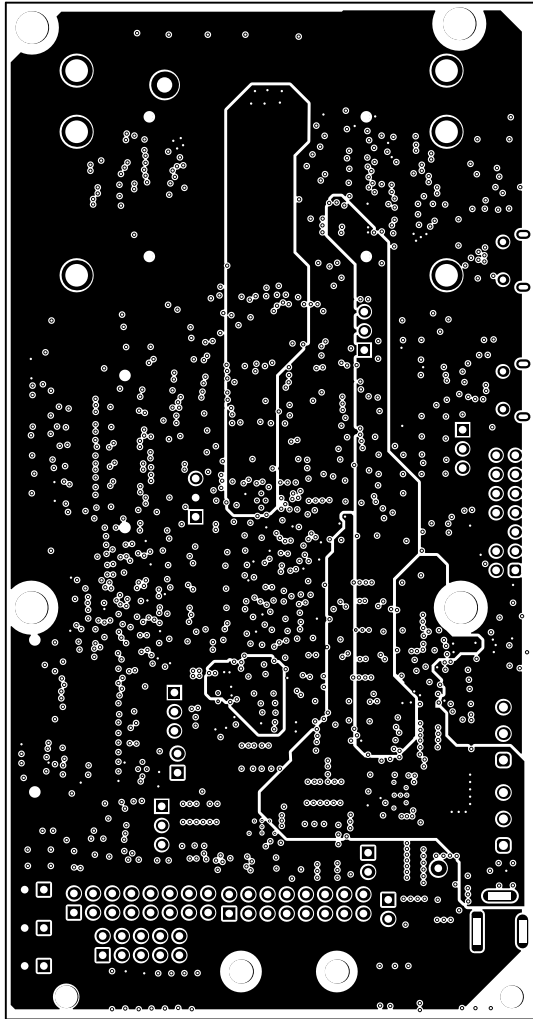
ALL ARTWORK VIEWED FROM TOP SIDE	BOARD #: PROC074	REV: A	SUN REV: Not In VersionControl
LAYER NAME = L4-GND	TID #: N/A		
PLOT NAME = Signal Layer 3	GENERATED : 8/28/2018 12:35:12 PM		TEXAS INSTRUMENTS



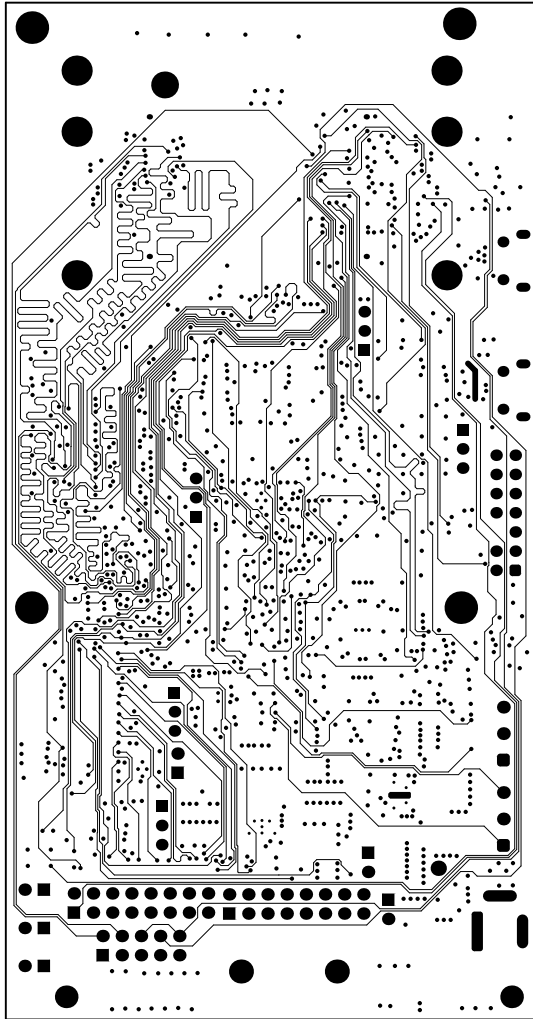
ALL ARTWORK VIEWED FROM TOP SIDE	BOARD #: PROC074	REV: A	SUN REV: Not In VersionControl
LAYER NAME = L5-PWR/SIG	TID #: N/A		
PLOT NAME = Signal Layer 4	GENERATED : 8/28/2018 12:35:13 PM		TEXAS INSTRUMENTS



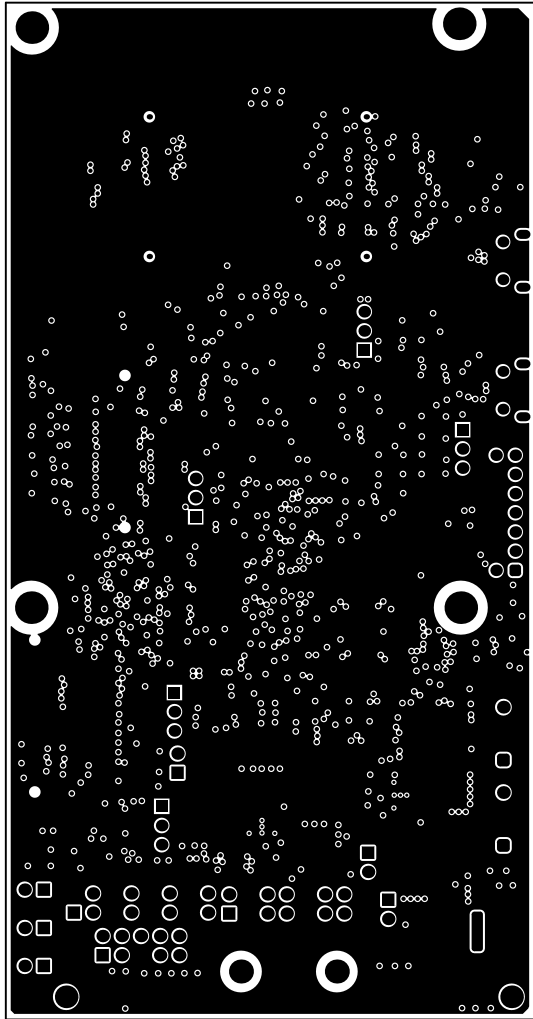
ALL ARTWORK VIEWED FROM TOP SIDE	BOARD #: PR0C074	REV: A	SUN REV: Not In VersionControl
LAYER NAME = L6-SIG2	TID #: N/A		
PLOT NAME = Signal Layer 5	GENERATED : 8/28/2018 12:35:15 PM		TEXAS INSTRUMENTS



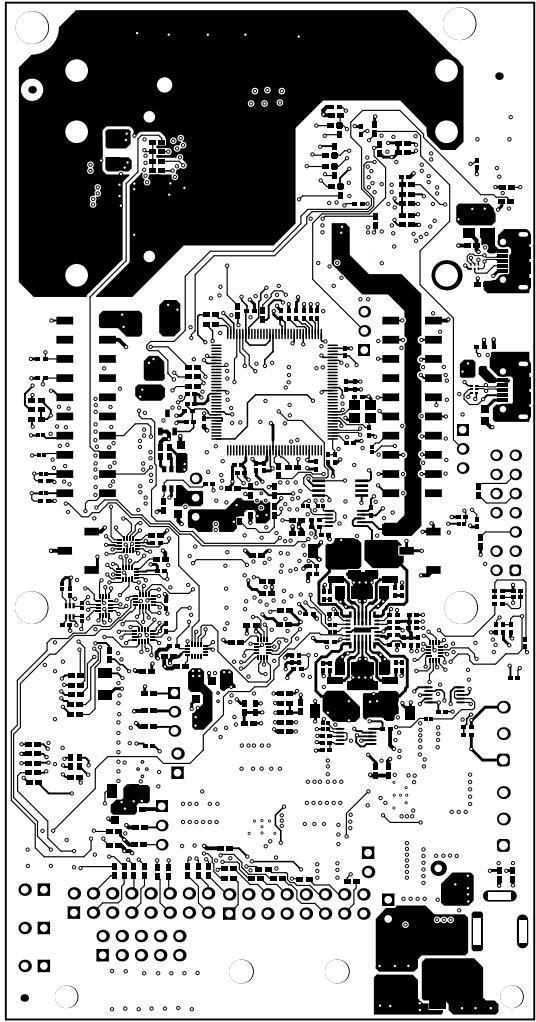
ALL ARTWORK VIEWED FROM TOP SIDE	BOARD #: PROC074	REV: A	SUN REV: Not In VersionControl
LAYER NAME = L7-PWR2	TID #: N/A		
PLOT NAME = Signal Layer 6	GENERATED : 8/28/2018 12:35:16 PM		TEXAS INSTRUMENTS



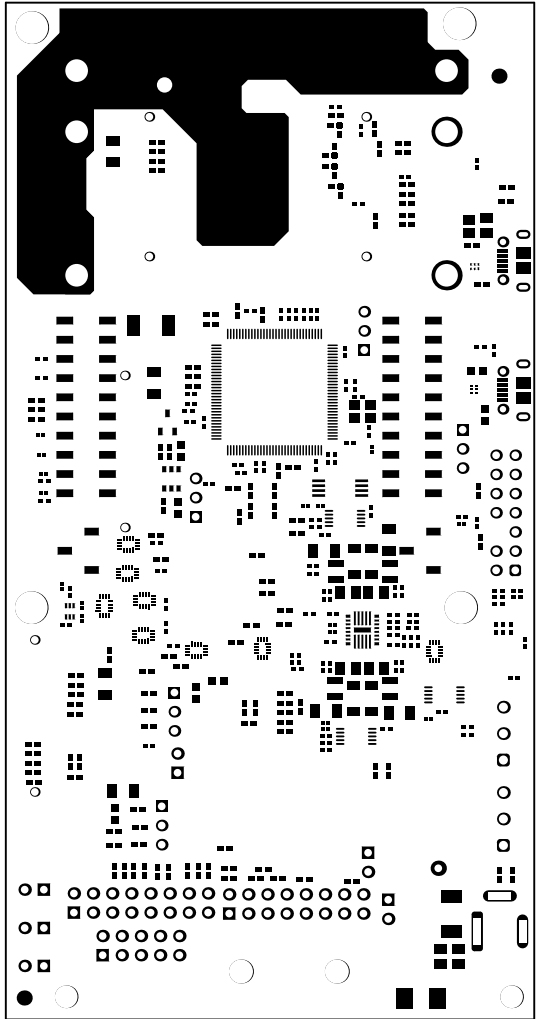
ALL ARTWORK VIEWED FROM TOP SIDE	BOARD #: PROC074	REV: A	SUN REV: Not In VersionControl
LAYER NAME = L8-SIG3	TID #: N/A		
PLOT NAME = Signal Layer 7	GENERATED : 8/28/2018 12:35:17 PM		TEXAS INSTRUMENTS



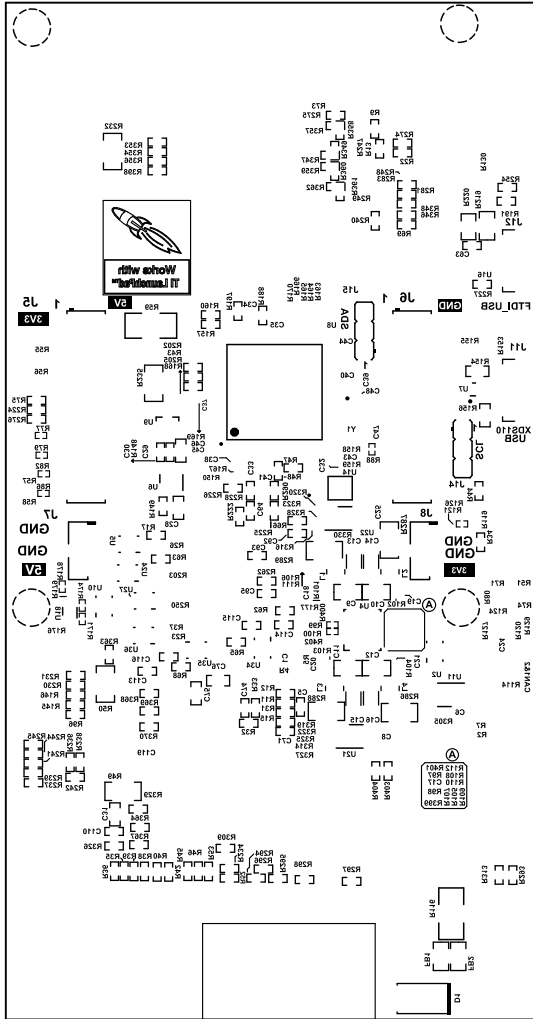
ALL ARTWORK VIEWED FROM TOP SIDE	BOARD #: PROC074	REV: A	SUN REV: Not In VersionControl
LAYER NAME = L9-GND	TID #: N/A		
PLOT NAME = Signal Layer 8	GENERATED : 8/28/2018 12:35:19 PM	TEXAS INSTRUMENTS	



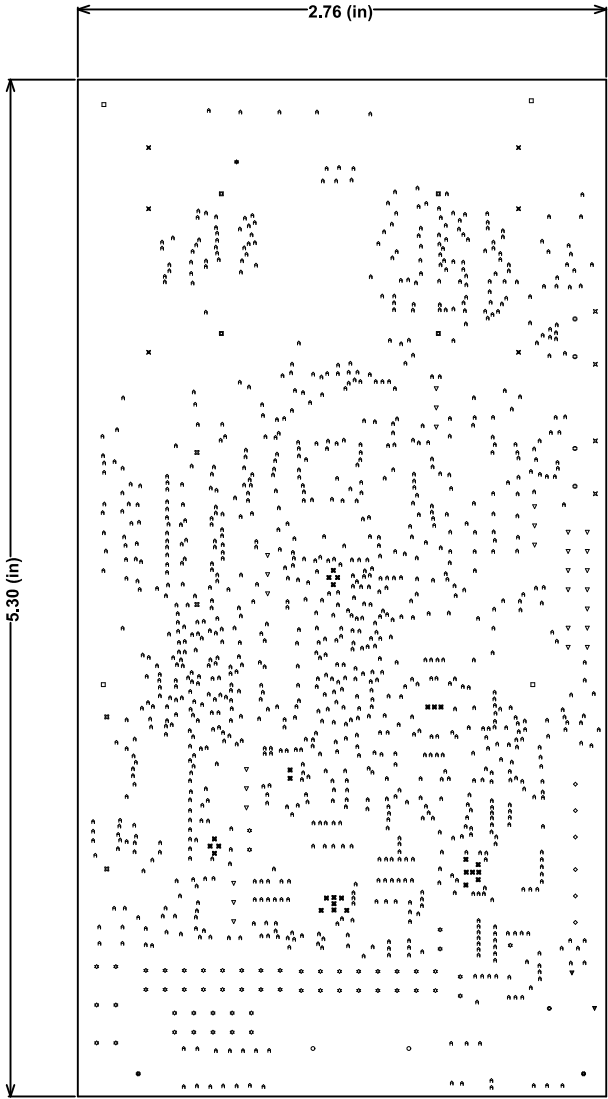
ALL ARTWORK VIEWED FROM TOP SIDE	BOARD #: PR0C074	REV: A	SUN REV: Not In VersionControl
LAYER NAME = Bottom Layer	TID #: N/A		
PLOT NAME = Bottom Layer	GENERATED : 8/28/2018 12:35:20 PM	TEXAS INSTRUMENTS	



ALL ARTWORK VIEWED FROM TOP SIDE	BOARD #: PROC074	REV: A	SUN REV: Not In VersionControl
LAYER NAME = Bottom Solder	TID #: N/A		
PLOT NAME = Bottom Solder Mask	GENERATED : 8/28/2018 12:35:22 PM	TEXAS INSTRUMENTS	



ALL ARTWORK VIEWED FROM TOP SIDE	BOARD #: PRO0074	REV: A	SUN REV: Not In VersionControl
LAYER NAME = Bottom Overlay	TID #: N/A		
PLOT NAME = Bottom Overlay	GENERATED : 8/28/2018 12:35:23 PM	TEXAS INSTRUMENTS	

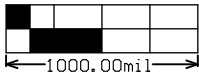
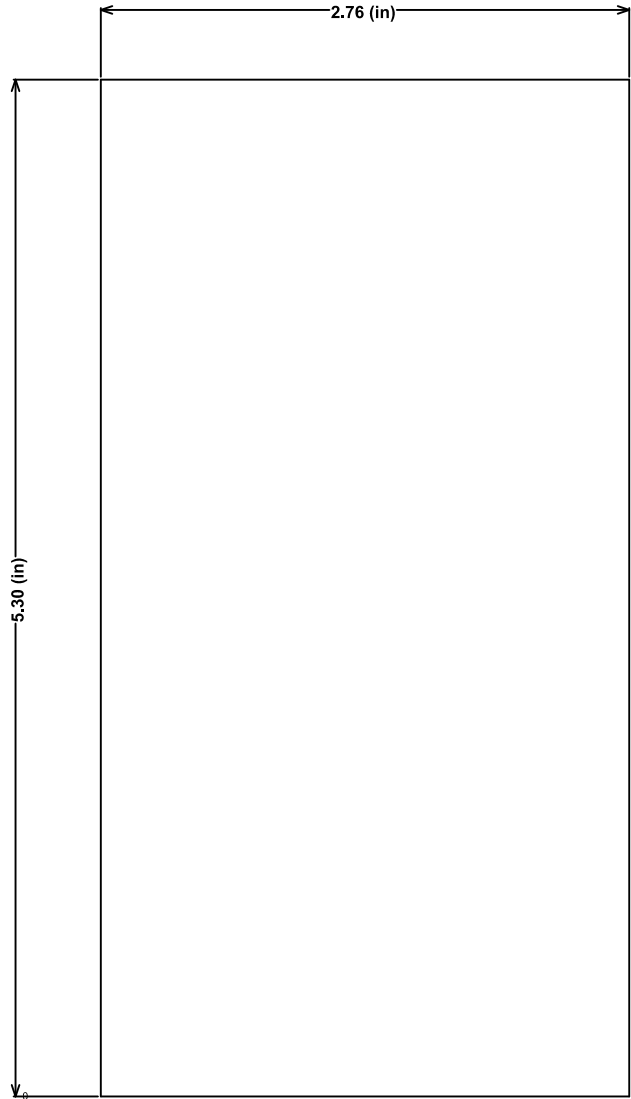


Symbol	Quantity	Finished Hole Size	Plated	Hole Type	Drill Layer Pair	Routed Path Length	Hole Length
□	4	40.00mil (1.016mm)	NPTH	Round	Top Layer – Bottom Layer	–	–
⊗	4	40.16mil (1.020mm)	NPTH	Round	Top Layer – Bottom Layer	–	–
⊕	2	118.11mil (3.000mm)	NPTH	Round	Top Layer – Bottom Layer	–	–
○	2	125.20mil (3.180mm)	NPTH	Round	Top Layer – Bottom Layer	–	–
□	4	170.00mil (4.318mm)	NPTH	Round	Top Layer – Bottom Layer	–	–
⊗	27	7.87mil (0.200mm)	PTH	Round	Top Layer – Bottom Layer	–	–
⊕	1123	12.20mil (0.310mm)	PTH	Round	Top Layer – Bottom Layer	–	–
⊕	4	33.47mil (0.850mm)	PTH	Round	Top Layer – Bottom Layer	–	–
☆	55	40.00mil (1.016mm)	PTH	Round	Top Layer – Bottom Layer	–	–
▽	28	40.16mil (1.020mm)	PTH	Round	Top Layer – Bottom Layer	–	–
◇	6	47.24mil (1.200mm)	PTH	Round	Top Layer – Bottom Layer	–	–
★	1	80.00mil (2.032mm)	PTH	Round	Top Layer – Bottom Layer	–	–
✕	6	118.11mil (3.000mm)	PTH	Round	Top Layer – Bottom Layer	–	–
▽	2	39.37mil (1.000mm)	PTH	Rectangle	Top Layer – Bottom Layer	118.11mil (3.000mm)	118.11mil (3.000mm)
⊙	1	39.37mil (1.000mm)	PTH	Rectangle	Top Layer – Bottom Layer	137.80mil (3.500mm)	137.80mil (3.500mm)
⊗	4	23.62mil (0.600mm)	PTH	Slot	Top Layer – Bottom Layer	27.56mil (0.700mm)	51.18mil (1.300mm)
1273 Total							

Slot definitions : Routed Path Length = Calculated from tool start centre position to tool end centre position.
Hole Length = Routed Path Length + Tool Size = Slot length as defined in the PCB layout

Drill tolerances:
FOR PTH +/- 3MIL
FOR NPTH +/- 2MIL
For 12.2 mil drill via +0/-12.2 mil
For 7.87 mil drill via +0/-7.87 mil

ALL ARTWORK VIEWED FROM TOP SIDE	BOARD #: PROCO74	REV: A	SUN REV: Not In VersionControl
LAYER NAME = Drill Drawing	TID #: N/A		
PLOT NAME = Drill Drawing	GENERATED : 8/28/2018 12:35:25 PM		TEXAS INSTRUMENTS



ALL ARTWORK VIEWED FROM TOP SIDE	BOARD #: PROC074	REV: A	SUN REV: Not In VersionControl
LAYER NAME =	TID #: N/A		
PLOT NAME = Board Dimensions	GENERATED : 8/28/2018 12:35:29 PM		TEXAS INSTRUMENTS